



EBARA

SHINWA
COOLING TOWER

Model CDW

EBARA OPEN CIRCUIT TYPE COOLING TOWER



FEATURES OF CDW MODELS

SUPERIOR MATERIAL, EXCELLENT PERFORMANCE IN ANTI-CORROSION

- Cooling tower main body is anti-seismic structure; the steel material meets the JISG3101-SS400 standard. And as the steel is hot-dip galvanized, they are completely rust and corrosion resistant.
- Fan casing and lower water basin are made of FRP material which is anti-corrosion, chemical resistant and impact resistant. Moreover, fan casing's surface is durable, stable and also physically good look.

HIGH EFFICIENT LOW NOISE AXIAL FAN SYSTEM

- Owing to EBARA SHINWA's advanced technology, the applying of motor specially designed for cooling tower and belt drive system can make the fan system to be super low noise.
- Fan casing is designed as a cone shape. Consequently, it can reduce energy consumption, and has a remarkable result in energy saving.
- Fan's material is high quality aluminium alloy which is anti-corrosion and durable. Meanwhile, fan blade and wheel hub are cut into the right angle so it's able to adjust angle by scale.

HIGH EFFICIENT COMPACT BELT DRIVE SYSTEM

- SRS model belt drive system is EBARA SHINWA's original. It is compact and very effective.
- Durable V-Belt and pulley are easy to adjust. Besides, strong belt cover, which is made of FRP, is easy to dismantle and reassemble. Belt cover keeps the system safe and well operated as it safeguards the system against foreign objects carried from the outside.

HIGH QUALITY FILL

- The fill is designed in ripple pattern, used as hanging sheets.
- Maximizes heat exchange efficiency between water and air, as well as slow down water flow rate.
- The unique designed fill can be modified. It is not only sturdy and durable but also easy and fast to clean.

UNIQUE WATER DISTRIBUTION SYSTEM

- Gravity water distribution system is EBARA SHINWA's original. It is well-distributed, and maximizes efficiency of the fill.

EASY TO MAINTAIN

- Belt cover is used with wing bolts, so it's very convenient to dismantle and reassemble by hands.
- Lower water basin is sloped for the purpose of better performance in water flowing and cleaning.
- As there are inspection door, cat walk and ladder, it's convenient to inspect and maintain a cooling tower.

SHORT INSTALLATION TIME

- By separating cooling tower main body and fan casing in transportation (CDW-100 ~ CDW-200), it's easier to transport, assemble at a work site, and consume less installation time as well.

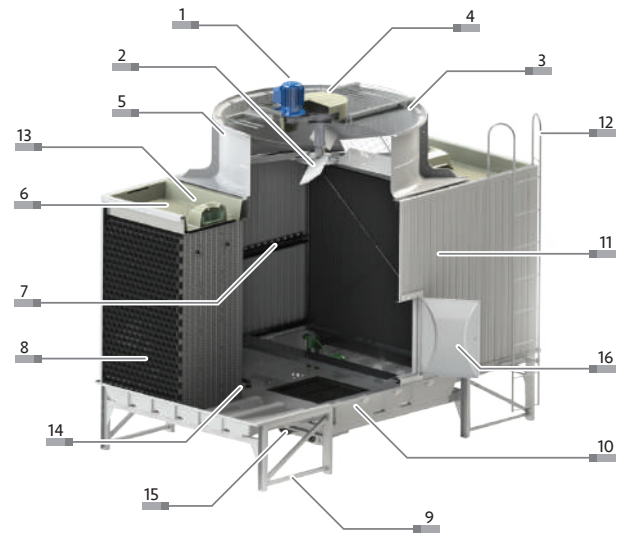
STRUCTURES OF CDW MODELS

MODEL

CDW-100AS-*1 ~ CDW-250AS-*1

| NO. | PARTS NAME | MATERIALS | Q'TY | REMARKS |
|-----|-------------------|----------------------------|---------|------------------------|
| 1 | Motor | | 1 Pc | Total Enclosed Outdoor |
| 2 | Fan | Alum. Alloy Cast | 1 Set | |
| 3 | Fan Guard | H.D.G.Steel | 1 Set | Hot Dip Galvanized |
| 4 | Belt Cover | F.R.P. | 1 Set | |
| 5 | Fan Casing | F.R.P. | 1 Set | |
| 6 | Upper Water Basin | F.R.P. | 2 Pcs | |
| 7 | Framework | H.D.G.Steel | 1 Set | Hot Dip Galvanized |
| 8 | Fill | P.V.C. | 1 Set | |
| 9 | Lower Frame | H.D.G.Steel | 1 Set | Hot Dip Galvanized |
| 10 | Lower Water Basin | F.R.P. | 1 Set | |
| 11 | Casing Panel | F.R.P. | 2 Sides | |
| 12 | Ladder | H.D.G.Steel | 1 Pc | Hot Dip Galvanized |
| 13 | Sprinkler Cover | F.R.P. | 2 Pcs | |
| 14 | Overflow Pipe | P.V.C. | 1 Set | |
| 15 | Outlet Pipe | EPT (CDW-100 ~ CDW-200) | 1 Set | |
| | | H.D.G.Steel (CDW-250) | 1 Set | Hot Dip Galvanized |
| 16 | Inspection Door | F.R.P. | 1 Pc | |

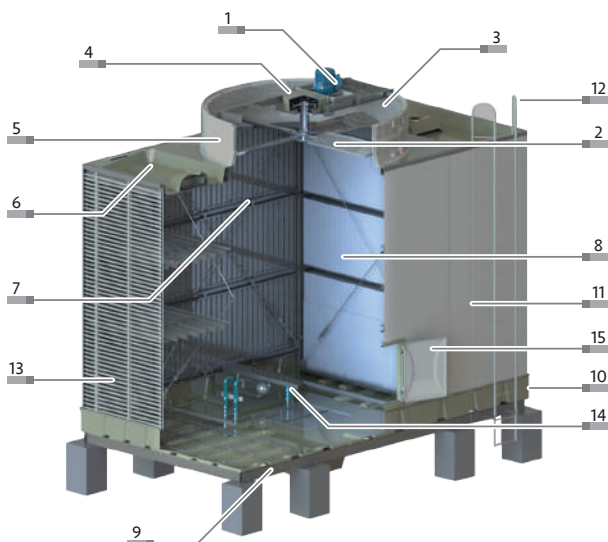
STANDARD COLOR : GRAY



* The structure drawing is an external piping type.

MODEL

CDW-300AS-*1 ~ CDW-350AS-*1



| NO. | PARTS NAME | MATERIALS | Q'TY | REMARKS |
|-----|-------------------|------------------|---------|------------------------|
| 1 | Motor | | 1 Pc | Total Enclosed Outdoor |
| 2 | Fan | Alum. Alloy Cast | 1 Set | |
| 3 | Fan Guard | H.D.G.Steel | 1 Set | Hot Dip Galvanized |
| 4 | Belt Cover | F.R.P. | 1 Set | |
| 5 | Fan Casing | F.R.P. | 1 Set | |
| 6 | Upper Water Basin | F.R.P. | 2 Pcs | |
| 7 | Framework | H.D.G.Steel | 1 Set | Hot Dip Galvanized |
| 8 | Fill | P.V.C. | 1 Set | |
| 9 | Lower Frame | H.D.G.Steel | 1 Set | Hot Dip Galvanized |
| 10 | Lower Water Basin | F.R.P. | 1 Set | |
| 11 | Casing Panel | F.R.P. | 2 Sides | |
| 12 | Ladder | H.D.G.Steel | 1 Pc | Hot Dip Galvanized |
| 13 | Louver | P.V.C. | 2 Sides | |
| 14 | Overflow Pipe | P.V.C. | 1 Set | |
| 15 | Inspection Door | F.R.P. | 1 Pc | |

STANDARD COLOR : GRAY

* The structure drawing is an external piping type.

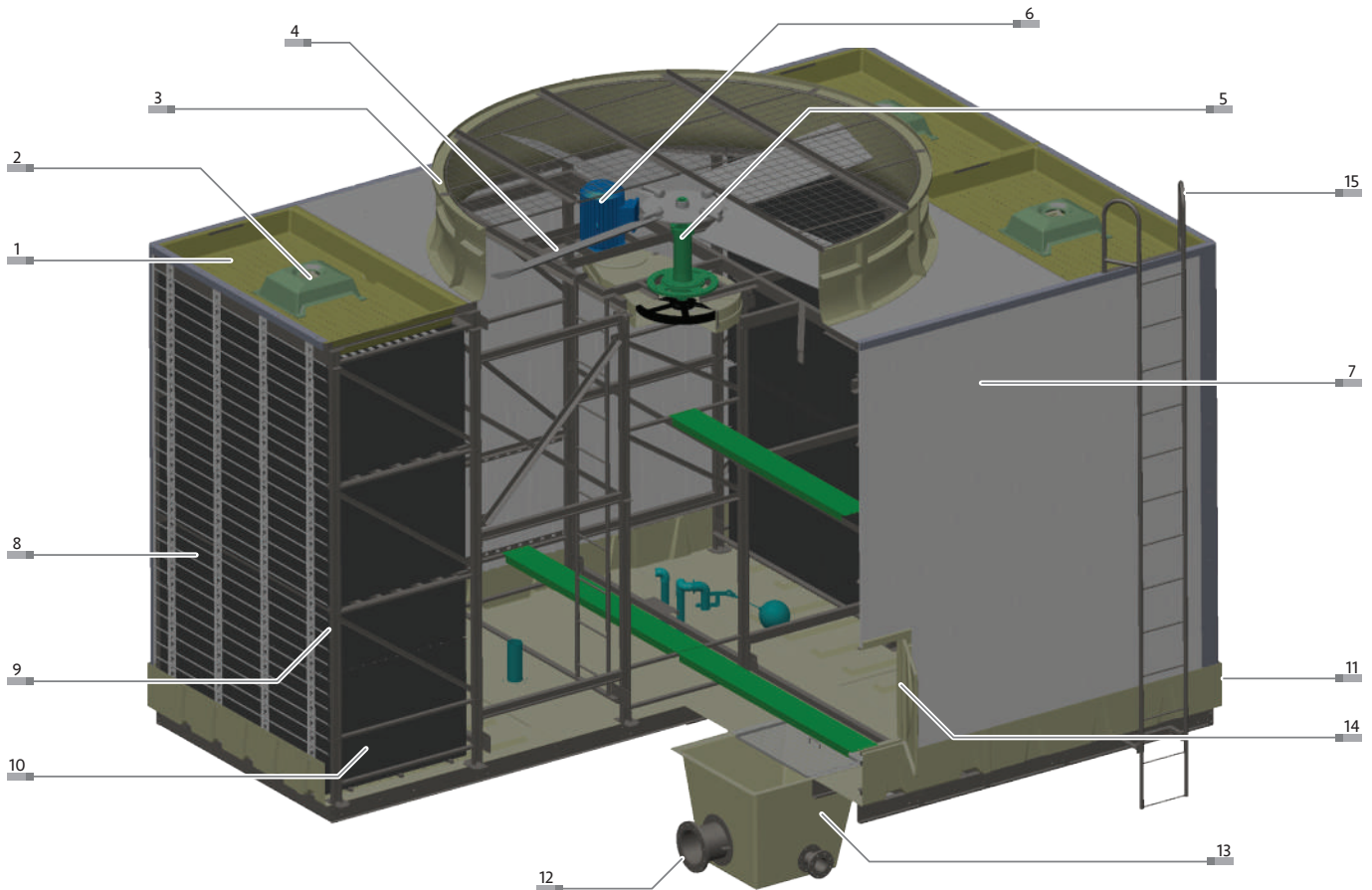
MODEL

CDW-400AS-*1 ~ CDW-800AS-*1

| NO. | PARTS NAME | MATERIALS | Q'TY | REMARKS |
|-----|-------------------|-----------------------------|---------|------------------------|
| 1 | Upper Water Basin | F.R.P. | 4 Pcs | |
| 2 | Sprinkler Cover | F.R.P. | 4 Pcs | |
| 3 | Fan Casing | F.R.P. | 1 Set | |
| 4 | Fan | Alum. Alloy Cast | 1 Set | |
| 5 | Speed Reducer | | 1 Pc | |
| 6 | Motor | | 1 Pc | Total Enclosed Outdoor |
| 7 | Casing Panel | F.R.P. (CDW-400) | 2 Sides | |
| | | P.V.C. (CDW-500~CDW-800) | 2 Sides | |
| 8 | Louver | P.V.C. | 2 Sides | |
| 9 | Framework | H.D.G.Steel | 1 Set | Hot Dip Galvanized |
| 10 | Fill | P.V.C. | 1 Set | |
| 11 | Lower Water Basin | F.R.P. | 1 Set | |
| 12 | Outlet Pipe | H.D.G.Steel | 1 Set | Hot Dip Galvanized |
| 13 | Suction Tank | F.R.P. | 1 Pc | |
| 14 | Inspection Door | F.R.P. | 1 Pc | |
| 15 | Ladder | H.D.G.Steel | 1 Pc | Hot Dip Galvanized |

STANDARD COLOR : GRAY OR WHITE

* The structure drawing is an external piping type.



SPECIFICATION OF CDW MODELS SHOWN IN PARAMETER TABLES

CDW-ASY-X

Standard Condition

Water Temp : Inlet = 37°C, Outlet = 32°C, W.B. = 28°C

| MODEL | VOLUME OF OUTLET COLD WATER (m ³ /h) | | DIMENSION (mm) | | | MOTOR POWER | FAN DIAMETER | HEAD LOSS | SHIPPING WEIGHT | OPERATION WEIGHT |
|----------------|---|----------|----------------|---------|--------|-------------|--------------|-----------|-------------------|-------------------|
| | W.B.28°C | W.B.27°C | L (mm) | W (mm) | H (mm) | KW | mm | m | kg | kg |
| CDW-100ASY-X | 100 | 115 | 3770 | 1750 | 2770 | 3.7 | 1500 | 4 | 880 | 2490 |
| CDW-125ASY-X | 125 | 143 | 3770 | 1950 | 2770 | 3.7 | 1500 | 4 | 910 | 2520 |
| CDW-135ASY-X | 135 | 155 | 4070 | 2150 | 2770 | 3.7 | 1800 | 4 | 990 | 2900 |
| CDW-150ASY-X | 150 | 172 | 4070 | 2150 | 2770 | 5.5 | 1800 | 4 | 1010 | 2920 |
| CDW-175ASY-X | 175 | 200 | 4370 | 2350 | 2770 | 5.5 | 2100 | 4 | 1140 | 3250 |
| CDW-200ASY-X | 200 | 230 | 4370 | 2450 | 2770 | 7.5 | 2100 | 4 | 1180 | 3330 |
| CDW-250ASY-X | 250 | 287 | 4370 | 2450 | 3925 | 11.0 | 2200 | 6 | 1420 | 3800 |
| CDW-100ASY-X*2 | 200 | 230 | 3770 | 3500 | 2770 | 3.7 * 2 | 1500 * 2 | 4 | 1720 | 4940 |
| CDW-125ASY-X*2 | 250 | 286 | 3770 | 3900 | 2770 | 3.7 * 2 | 1500 * 2 | 4 | 1780 | 5000 |
| CDW-135ASY-X*2 | 270 | 310 | 4070 | 4300 | 2770 | 3.7 * 2 | 1800 * 2 | 4 | 1940 | 5760 |
| CDW-150ASY-X*2 | 300 | 344 | 4070 | 4300 | 2770 | 5.5 * 2 | 1800 * 2 | 4 | 1980 | 5800 |
| CDW-175ASY-X*2 | 350 | 400 | 4370 | 4700 | 2770 | 5.5 * 2 | 2100 * 2 | 4 | 2240 | 6460 |
| CDW-200ASY-X*2 | 400 | 460 | 4370 | 4900 | 2770 | 7.5 * 2 | 2100 * 2 | 4 | 2320 | 6620 |
| CDW-250ASY-X*2 | 500 | 574 | 4370 | 4900 | 3925 | 11.0 * 2 | 2200 * 2 | 6 | 2800 | 7560 |
| CDW-100ASY-X*3 | 300 | 345 | 3770 | 5250 | 2770 | 3.7 * 3 | 1500 * 3 | 4 | 2560 | 7390 |
| CDW-125ASY-X*3 | 375 | 429 | 3770 | 5850 | 2770 | 3.7 * 3 | 1500 * 3 | 4 | 2650 | 7480 |
| CDW-135ASY-X*3 | 405 | 465 | 4070 | 6450 | 2770 | 3.7 * 3 | 1800 * 3 | 4 | 2890 | 8620 |
| CDW-150ASY-X*3 | 450 | 344 | 4070 | 6450 | 2770 | 5.5 * 3 | 1800 * 3 | 4 | 2950 | 8680 |
| CDW-175ASY-X*3 | 525 | 600 | 4370 | 7050 | 2770 | 5.5 * 3 | 2100 * 3 | 4 | 3340 | 9670 |
| CDW-200ASY-X*3 | 600 | 690 | 4370 | 7350 | 2770 | 7.5 * 3 | 2100 * 3 | 4 | 3460 | 9910 |
| CDW-250ASY-X*3 | 750 | 861 | 4370 | 7350 | 3925 | 11.0 * 3 | 2200 * 3 | 6 | 4180 | 11320 |
| CDW-100ASY-X*n | 100 *n | 115 *n | 3770 | 1750 *n | 2770 | 3.7 * n | 1500 * n | 4 | 880+((n-1)*840) | 2490+((n-1)*2450) |
| CDW-125ASY-X*n | 125 *n | 143 *n | 3770 | 1950 *n | 2770 | 3.7 * n | 1500 * n | 4 | 910+((n-1)*870) | 2520+((n-1)*2480) |
| CDW-135ASY-X*n | 135 *n | 155 *n | 4070 | 2150 *n | 2770 | 3.7 * n | 1800 * n | 4 | 990+((n-1)*950) | 2900+((n-1)*2860) |
| CDW-150ASY-X*n | 150 *n | 172 *n | 4070 | 2150 *n | 2770 | 5.5 * n | 1800 * n | 4 | 1010+((n-1)*970) | 2920+((n-1)*2880) |
| CDW-175ASY-X*n | 175 *n | 200 *n | 4370 | 2350 *n | 2770 | 5.5 * n | 2100 * n | 4 | 1140+((n-1)*1100) | 3250+((n-1)*3210) |
| CDW-200ASY-X*n | 200 *n | 230 *n | 4370 | 2450 *n | 2770 | 7.5 * n | 2100 * n | 4 | 1180+((n-1)*1140) | 3330+((n-1)*3290) |
| CDW-250ASY-X*n | 250 *n | 287*n | 4370 | 2450 *n | 3925 | 11.0 * n | 2200 * n | 6 | 1420+((n-1)*1380) | 3800+((n-1)*3760) |

NOTES:

- Not all of the cooling tower models are shown in this catalog due to the limited space. The drawing of more than five cells assembled together can be provided separately by contacting our windows.
- Parameter table is subject to change without notice due to more advanced technology. The dimension in this catalog is only a reference, please use the drawing specifically provided for your project in practical site work.
- Our company can provide other special forms of cooling tower to meet your requirements. And please contact us.
- Internal piping type is also available on request (Model CDW-ASY-X ~ CDW-ASY-X *n).

CDW-ASY-C

Standard Condition



Water Temp : Inlet = 37°C, Outlet = 32°C, W.B. = 28°C

| MODEL | VOLUME OF OUTLET COLD WATER (m ³ /h) | | DIMENSION (mm) | | | FAN DIAMETER | HEAD LOSS | SHIPPING WEIGHT | OPERATION WEIGHT |
|----------------|---|----------|----------------|---------|--------|--------------|-----------|-------------------|-------------------|
| | W.B.28°C | W.B.27°C | L (mm) | W (mm) | H (mm) | mm | m | kg | kg |
| CDW-100ASY-C | 100 | 115 | 3770 | 1750 | 2770 | 1500 | 4 | 900 | 2510 |
| CDW-125ASY-C | 125 | 143 | 3770 | 1950 | 2770 | 1500 | 4 | 930 | 2540 |
| CDW-135ASY-C | 135 | 155 | 4070 | 2150 | 2770 | 1800 | 4 | 1010 | 2920 |
| CDW-150ASY-C | 150 | 172 | 4070 | 2150 | 2770 | 1800 | 4 | 1030 | 2940 |
| CDW-175ASY-C | 175 | 200 | 4370 | 2350 | 2770 | 2100 | 4 | 1160 | 3270 |
| CDW-200ASY-C | 200 | 230 | 4370 | 2450 | 2770 | 2100 | 4 | 1200 | 3350 |
| CDW-250ASY-C | 250 | 287 | 4370 | 2450 | 3925 | 2200 | 6 | 1440 | 3820 |
| CDW-100ASY-C*2 | 200 | 230 | 3770 | 3500 | 2770 | 1500* 2 | 4 | 1760 | 4980 |
| CDW-125ASY-C*2 | 250 | 286 | 3770 | 3900 | 2770 | 1500* 2 | 4 | 1820 | 5040 |
| CDW-135ASY-C*2 | 270 | 310 | 4070 | 4300 | 2770 | 1800* 2 | 4 | 1980 | 5800 |
| CDW-150ASY-C*2 | 300 | 344 | 4070 | 4300 | 2770 | 1800* 2 | 4 | 2020 | 5840 |
| CDW-175ASY-C*2 | 350 | 400 | 4370 | 4700 | 2770 | 2100* 2 | 4 | 2280 | 6500 |
| CDW-200ASY-C*2 | 400 | 460 | 4370 | 4900 | 2770 | 2100* 2 | 4 | 2360 | 6660 |
| CDW-250ASY-C*2 | 500 | 574 | 4370 | 4900 | 3925 | 2200* 2 | 6 | 2840 | 7600 |
| CDW-100ASY-C*3 | 300 | 345 | 3770 | 5250 | 2770 | 1500* 3 | 4 | 2620 | 7450 |
| CDW-125ASY-C*3 | 375 | 429 | 3770 | 5850 | 2770 | 1500* 3 | 4 | 2710 | 7540 |
| CDW-135ASY-C*3 | 405 | 465 | 4070 | 6450 | 2770 | 1800* 3 | 4 | 2950 | 8680 |
| CDW-150ASY-C*3 | 450 | 344 | 4070 | 6450 | 2770 | 1800* 3 | 4 | 3010 | 8740 |
| CDW-175ASY-C*3 | 525 | 600 | 4370 | 7050 | 2770 | 2100* 3 | 4 | 3400 | 9730 |
| CDW-200ASY-C*3 | 600 | 690 | 4370 | 7350 | 2770 | 2100* 3 | 4 | 3520 | 9970 |
| CDW-250ASY-C*3 | 750 | 861 | 4370 | 7350 | 3925 | 2200* 3 | 6 | 4240 | 11380 |
| CDW-100ASY-C*n | 100 *n | 115 *n | 3770 | 1750 *n | 2770 | 1500 *n | 4 | 900+((n-1)*860) | 2510+((n-1)*2470) |
| CDW-125ASY-C*n | 125 *n | 143 *n | 3770 | 1950 *n | 2770 | 1500 *n | 4 | 930+((n-1)*890) | 2540+((n-1)*2500) |
| CDW-135ASY-C*n | 135 *n | 155 *n | 4070 | 2150 *n | 2770 | 1800* n | 4 | 1010+((n-1)*970) | 2920+((n-1)*2880) |
| CDW-150ASY-C*n | 150 *n | 172 *n | 4070 | 2150 *n | 2770 | 1800 *n | 4 | 1030+((n-1)*990) | 2940+((n-1)*2900) |
| CDW-175ASY-C*n | 175 *n | 200 *n | 4370 | 2350 *n | 2770 | 2100* n | 4 | 1160+((n-1)*1120) | 3270+((n-1)*3230) |
| CDW-200ASY-C*n | 200 *n | 230 *n | 4370 | 2450 *n | 2770 | 2100* n | 4 | 1200+((n-1)*1160) | 3350+((n-1)*3310) |
| CDW-250ASY-C*n | 250 *n | 287*n | 4370 | 2450 *n | 3925 | 2200 *n | 6 | 1440+((n-1)*1400) | 3820+((n-1)*3780) |

NOTES:

1. Not all of the cooling tower models are shown in this catalog due to the limited space. The drawing of more than five cells assembled together can be provided separately by contacting our windows.
2. Parameter table is subject to change without notice due to more advanced technology. The dimension in this catalog is only a reference, please use the drawing specifically provided for your project in practical site work.
3. Our company can provide other special forms of cooling tower to meet your requirements. And please contact us.
4. Internal piping type is also available on request (Model CDW-ASY-C ~ CDW-ASY-C *n).

SPECIFICATION OF CDW MODELS SHOWN IN PARAMETER TABLES

CDW-ASY-S

Standard Condition

Water Temp : Inlet = 37°C, Outlet = 32°C, W.B. = 28°C

| MODEL | VOLUME OF OUTLET COLD WATER (m ³ /h) | | DIMENSION (mm) | | | MOTOR POWER | FAN DIAMETER | HEAD LOSS | SHIPPING WEIGHT | OPERATION WEIGHT |
|----------------|---|----------|----------------|----------------------|--------|-------------|--------------|-----------|-------------------|---------------------|
| | W.B.28°C | W.B.27°C | L (mm) | W (mm) | H (mm) | KW | mm | m | kg | kg |
| CDW-300ASY-S | 300 | 344 | 5570 | 3100 | 3900 | 7.5 | 2600 | 6 | 2675 | 7650 |
| CDW-350ASY-S | 350 | 402 | 5570 | 3100 | 3900 | 11.0 | 2600 | 6 | 2700 | 8010 |
| CDW-400ASY-S | 400 | 459 | 5870 | 3800 | 3950 | 11.0 | 3000 | 6 | 3700 | 9975 |
| CDW-450ASY-S | 450 | 517 | 5870 | 3800 | 3950 | 15.0 | 3000 | 6 | 3725 | 10000 |
| CDW-500ASY-S | 500 | 574 | 6470 | 4600 | 3875 | 15.0 | 3500 | 6 | 4240 | 12110 |
| CDW-550ASY-S | 550 | 632 | 6470 | 4600 | 3875 | 18.5 | 3500 | 6 | 4265 | 12135 |
| CDW-600ASY-S | 600 | 689 | 6470 | 4600 | 4520 | 18.5 | 3500 | 8 | 5060 | 13940 |
| CDW-650ASY-S | 650 | 746 | 6470 | 4600 | 4520 | 22.0 | 3500 | 8 | 5085 | 13965 |
| CDW-700ASY-S | 700 | 804 | 6870 | 5400 | 4520 | 22.0 | 4000 | 8 | 5765 | 16360 |
| CDW-750ASY-S | 750 | 961 | 6870 | 5400 | 4520 | 30.0 | 4000 | 8 | 5790 | 16385 |
| CDW-800ASY-S | 800 | 918 | 6870 | 5800 | 4520 | 30.0 | 4000 | 8 | 6250 | 17940 |
| CDW-300ASY-S*2 | 600 | 688 | 5570 | 6100 | 3900 | 7.5 * 2 | 2600 * 2 | 6 | 4910 | 14925 |
| CDW-350ASY-S*2 | 700 | 804 | 5570 | 6100 | 3900 | 11.0 * 2 | 2600 * 2 | 6 | 4960 | 15355 |
| CDW-400ASY-S*2 | 800 | 918 | 5870 | 7500 | 3950 | 11.0 * 2 | 3000 * 2 | 6 | 6930 | 19400 |
| CDW-450ASY-S*2 | 900 | 1034 | 5870 | 7500 | 3950 | 15.0 * 2 | 3000 * 2 | 6 | 6980 | 19450 |
| CDW-500ASY-S*2 | 1000 | 1148 | 6470 | 9100 | 3875 | 15.0 * 2 | 3500 * 2 | 6 | 8000 | 23640 |
| CDW-550ASY-S*2 | 1100 | 1264 | 6470 | 9100 | 3875 | 18.5 * 2 | 3500 * 2 | 6 | 8050 | 23690 |
| CDW-600ASY-S*2 | 1200 | 1378 | 6470 | 9100 | 4520 | 18.5 * 2 | 3500 * 2 | 8 | 9585 | 27255 |
| CDW-650ASY-S*2 | 1300 | 1492 | 6470 | 9100 | 4520 | 22.0 * 2 | 3500 * 2 | 8 | 9635 | 27305 |
| CDW-700ASY-S*2 | 1400 | 1608 | 6870 | 10700 | 4520 | 22.0 * 2 | 4000 * 2 | 8 | 10970 | 32070 |
| CDW-750ASY-S*2 | 1500 | 1922 | 6870 | 10700 | 4520 | 30.0 * 2 | 4000 * 2 | 8 | 11020 | 32120 |
| CDW-800ASY-S*2 | 1600 | 1836 | 6870 | 11500 | 4520 | 30.0 * 2 | 4000 * 2 | 8 | 11920 | 35210 |
| CDW-300ASY-S*3 | 900 | 1032 | 5570 | 9100 | 3900 | 7.5 * 3 | 2600 * 3 | 6 | 7145 | 22200 |
| CDW-350ASY-S*3 | 1050 | 1206 | 5570 | 9100 | 3900 | 11.0 * 3 | 2600 * 3 | 6 | 7220 | 22700 |
| CDW-400ASY-S*3 | 1200 | 1377 | 5870 | 11200 | 3900 | 11.0 * 3 | 3000 * 3 | 6 | 10160 | 28825 |
| CDW-450ASY-S*3 | 1350 | 1551 | 5870 | 11200 | 3950 | 15.0 * 3 | 3000 * 3 | 6 | 10235 | 28900 |
| CDW-500ASY-S*3 | 1500 | 1722 | 6470 | 13600 | 3875 | 15.0 * 3 | 3500 * 3 | 6 | 11760 | 35170 |
| CDW-550ASY-S*3 | 1650 | 1896 | 6470 | 13600 | 3875 | 18.5 * 3 | 3500 * 3 | 6 | 11835 | 35245 |
| CDW-600ASY-S*3 | 1800 | 2067 | 6470 | 13600 | 4520 | 18.5 * 3 | 3500 * 3 | 8 | 14110 | 40570 |
| CDW-650ASY-S*3 | 1950 | 2238 | 6470 | 13600 | 4520 | 22.0 * 3 | 3500 * 3 | 8 | 14185 | 40645 |
| CDW-700ASY-S*3 | 2100 | 2412 | 6870 | 16000 | 4520 | 22.0 * 3 | 4000 * 3 | 8 | 16175 | 47780 |
| CDW-750ASY-S*3 | 2250 | 2883 | 6870 | 16000 | 4520 | 30.0 * 3 | 4000 * 3 | 8 | 16250 | 47855 |
| CDW-800ASY-S*3 | 2400 | 2754 | 6870 | 17200 | 4520 | 30.0 * 3 | 4000 * 3 | 8 | 17590 | 52480 |
| CDW-300ASY-S*n | 300 * n | 344 * n | 5570 | (3100*n)-(100*(n-1)) | 3900 | 7.5 * n | 2600 * n | 6 | 2675+((n-1)*2235) | 7650+((n-1)*7275) |
| CDW-350ASY-S*n | 350 * n | 402 * n | 5570 | (3100*n)-(100*(n-1)) | 3900 | 11.0 * n | 2600 * n | 6 | 2700+((n-1)*2260) | 8010+((n-1)*7345) |
| CDW-400ASY-S*n | 400 * n | 459 * n | 5870 | (3800*n)-(100*(n-1)) | 3950 | 11.0 * n | 3000 * n | 6 | 3700+((n-1)*3230) | 9975+((n-1)*9425) |
| CDW-450ASY-S*n | 450 * n | 517 * n | 5870 | (3800*n)-(100*(n-1)) | 3950 | 15.0 * n | 3000 * n | 6 | 3725+((n-1)*3255) | 10000+((n-1)*9450) |
| CDW-500ASY-S*n | 500 * n | 574 * n | 6470 | (4600*n)-(100*(n-1)) | 3875 | 15.0 * n | 3500 * n | 6 | 4240+((n-1)*3760) | 12110+((n-1)*11530) |
| CDW-550ASY-S*n | 550 * n | 632 * n | 6470 | (4600*n)-(100*(n-1)) | 3875 | 18.5 * n | 3500 * n | 6 | 4265+((n-1)*3785) | 12135+((n-1)*11555) |
| CDW-600ASY-S*n | 600 * n | 689 * n | 6470 | (4600*n)-(100*(n-1)) | 4520 | 18.5 * n | 3500 * n | 8 | 5060+((n-1)*4525) | 13940+((n-1)*13315) |
| CDW-650ASY-S*n | 650 * n | 746 * n | 6470 | (4600*n)-(100*(n-1)) | 4520 | 22.0 * n | 3500 * n | 8 | 5085+((n-1)*4550) | 13965+((n-1)*13340) |
| CDW-700ASY-S*n | 700 * n | 804 * n | 6870 | (5400*n)-(100*(n-1)) | 4520 | 22.0 * n | 4000 * n | 8 | 5765+((n-1)*5205) | 16360+((n-1)*15710) |
| CDW-750ASY-S*n | 750 * n | 961 * n | 6870 | (5400*n)-(100*(n-1)) | 4520 | 30.0 * n | 4000 * n | 8 | 5790+((n-1)*5230) | 16385+((n-1)*15735) |
| CDW-800ASY-S*n | 800 * n | 918 * n | 6870 | (5800*n)-(100*(n-1)) | 4520 | 30.0 * n | 4000 * n | 8 | 6250+((n-1)*5670) | 17940+((n-1)*17270) |

NOTES:

1. Not all of the cooling tower models are shown in this catalog due to the limited space. The drawing of more than five cells assembled together can be provided separately by contacting our windows.
2. Parameter table is subject to change without notice due to more advanced technology. The dimension in this catalog is only a reference, please use the drawing specifically provided for your project in practical site work.
3. Our company can provide other special forms of cooling tower to meet your requirements. And please contact us.
4. Internal piping type is available only CDW - 300 ~ 400.

CDW-ASY-C

Standard Condition



Water Temp : Inlet = 37°C, Outlet = 32°C, W.B. = 28°C

| MODEL | VOLUME OF OUTLET COLD WATER (m ³ /h) | | DIMENSION (mm) | | | FAN DIAMETER | HEAD LOSS | SHIPPING WEIGHT | OPERATION WEIGHT |
|----------------|---|----------|----------------|----------------------|--------|--------------|-----------|-------------------|---------------------|
| | W.B.28°C | W.B.27°C | L (mm) | W (mm) | H (mm) | mm | m | kg | kg |
| CDW-300ASY-C | 300 | 344 | 5570 | 3100 | 3900 | 2600 | 6 | 2700 | 7675 |
| CDW-350ASY-C | 350 | 402 | 5870 | 3800 | 3950 | 3000 | 6 | 3700 | 9975 |
| CDW-400ASY-C | 400 | 459 | 5870 | 3800 | 3950 | 3000 | 6 | 3725 | 10000 |
| CDW-450ASY-C | 450 | 517 | 6470 | 4600 | 3875 | 3500 | 6 | 4240 | 12110 |
| CDW-500ASY-C | 500 | 574 | 6470 | 4600 | 3875 | 3500 | 6 | 4265 | 12135 |
| CDW-550ASY-C | 550 | 632 | 6470 | 4600 | 4520 | 3500 | 8 | 5060 | 13940 |
| CDW-600ASY-C | 600 | 689 | 6470 | 4600 | 4520 | 3500 | 8 | 5085 | 13965 |
| CDW-650ASY-C | 650 | 746 | 6870 | 5400 | 4520 | 4000 | 8 | 5765 | 16360 |
| CDW-700ASY-C | 700 | 804 | 6870 | 5400 | 4520 | 4000 | 8 | 5790 | 16385 |
| CDW-750ASY-C | 750 | 961 | 6870 | 5800 | 4520 | 4000 | 8 | 6250 | 17940 |
| CDW-800ASY-C | 800 | 918 | 6870 | 5800 | 4520 | 4000 | 8 | 6275 | 17965 |
| CDW-300ASY-C*2 | 600 | 688 | 5570 | 6100 | 3900 | 2600 * 2 | 6 | 4960 | 14975 |
| CDW-350ASY-C*2 | 700 | 804 | 5870 | 7500 | 3950 | 3000 * 2 | 6 | 6930 | 19400 |
| CDW-400ASY-C*2 | 800 | 918 | 5870 | 7500 | 3950 | 3000 * 2 | 6 | 6980 | 19450 |
| CDW-450ASY-C*2 | 900 | 1034 | 6470 | 9100 | 3875 | 3500 * 2 | 6 | 8000 | 23640 |
| CDW-500ASY-C*2 | 1000 | 1148 | 6470 | 9100 | 3875 | 3500 * 2 | 6 | 8050 | 23690 |
| CDW-550ASY-C*2 | 1100 | 1264 | 6470 | 9100 | 4520 | 3500 * 2 | 8 | 9585 | 27255 |
| CDW-600ASY-C*2 | 1200 | 1378 | 6470 | 9100 | 4520 | 3500 * 2 | 8 | 9635 | 27305 |
| CDW-650ASY-C*2 | 1300 | 1492 | 6870 | 10700 | 4520 | 4000 * 2 | 8 | 10970 | 32070 |
| CDW-700ASY-C*2 | 1400 | 1608 | 6870 | 10700 | 4520 | 4000 * 2 | 8 | 11020 | 32120 |
| CDW-750ASY-C*2 | 1500 | 1922 | 6870 | 11500 | 4520 | 4000 * 2 | 8 | 11920 | 35210 |
| CDW-800ASY-C*2 | 1600 | 1836 | 6870 | 11500 | 4520 | 4000 * 2 | 8 | 11970 | 35260 |
| CDW-300ASY-C*3 | 900 | 1032 | 5570 | 9100 | 3900 | 2600 * 3 | 6 | 7220 | 22275 |
| CDW-350ASY-C*3 | 1050 | 1206 | 5870 | 11200 | 3950 | 3000 * 3 | 6 | 10160 | 28825 |
| CDW-400ASY-C*3 | 1200 | 1377 | 5870 | 11200 | 3950 | 3000 * 3 | 6 | 10235 | 28900 |
| CDW-450ASY-C*3 | 1350 | 1551 | 6470 | 13600 | 3875 | 3500 * 3 | 6 | 11760 | 35170 |
| CDW-500ASY-C*3 | 1500 | 1722 | 6470 | 13600 | 3875 | 3500 * 3 | 6 | 11835 | 35245 |
| CDW-550ASY-C*3 | 1650 | 1896 | 6470 | 13600 | 4520 | 3500 * 3 | 8 | 14110 | 40570 |
| CDW-600ASY-C*3 | 1800 | 2067 | 6470 | 13600 | 4520 | 3500 * 3 | 8 | 14185 | 40645 |
| CDW-650ASY-C*3 | 1950 | 2238 | 6870 | 16000 | 4520 | 4000 * 3 | 8 | 16175 | 47780 |
| CDW-700ASY-C*3 | 2100 | 2412 | 6870 | 16000 | 4520 | 4000 * 3 | 8 | 16250 | 47855 |
| CDW-750ASY-C*3 | 2250 | 2883 | 6870 | 17200 | 4520 | 4000 * 3 | 8 | 17590 | 52480 |
| CDW-800ASY-C*3 | 2400 | 2754 | 6870 | 17200 | 4520 | 4000 * 3 | 8 | 17665 | 52555 |
| CDW-300ASY-C*n | 300 * n | 344 * n | 5570 | (3100*n)-(100*(n-1)) | 3900 | 2600 * n | 6 | 2700+((n-1)*2260) | 7675+((n-1)*7300) |
| CDW-350ASY-C*n | 350 * n | 402 * n | 5870 | (3800*n)-(100*(n-1)) | 3950 | 3000 * n | 6 | 3700+((n-1)*3230) | 9975+((n-1)*9425) |
| CDW-400ASY-C*n | 400 * n | 459 * n | 5870 | (3800*n)-(100*(n-1)) | 3950 | 3000 * n | 6 | 3725+((n-1)*3255) | 10000+((n-1)*9450) |
| CDW-450ASY-C*n | 450 * n | 517 * n | 6470 | (4600*n)-(100*(n-1)) | 3875 | 3500 * n | 6 | 4240+((n-1)*3760) | 12110+((n-1)*11530) |
| CDW-500ASY-C*n | 500 * n | 574 * n | 6470 | (4600*n)-(100*(n-1)) | 3875 | 3500 * n | 6 | 4265+((n-1)*3785) | 12135+((n-1)*11555) |
| CDW-550ASY-C*n | 550 * n | 632 * n | 6470 | (4600*n)-(100*(n-1)) | 4520 | 3500 * n | 8 | 5060+((n-1)*4525) | 13940+((n-1)*13315) |
| CDW-600ASY-C*n | 600 * n | 689 * n | 6470 | (4600*n)-(100*(n-1)) | 4520 | 3500 * n | 8 | 5085+((n-1)*4550) | 13965+((n-1)*13340) |
| CDW-650ASY-C*n | 650 * n | 746 * n | 6870 | (5400*n)-(100*(n-1)) | 4520 | 4000 * n | 8 | 5765+((n-1)*5205) | 16360+((n-1)*15710) |
| CDW-700ASY-C*n | 700 * n | 804 * n | 6870 | (5400*n)-(100*(n-1)) | 4520 | 4000 * n | 8 | 5790+((n-1)*5230) | 16385+((n-1)*15735) |
| CDW-750ASY-C*n | 750 * n | 961 * n | 6870 | (5800*n)-(100*(n-1)) | 4520 | 4000 * n | 8 | 6250+((n-1)*5670) | 17940+((n-1)*17270) |
| CDW-800ASY-C*n | 800 * n | 918 * n | 6870 | (5800*n)-(100*(n-1)) | 4520 | 4000 * n | 8 | 6275+((n-1)*5695) | 17965+((n-1)*17295) |

NOTES:

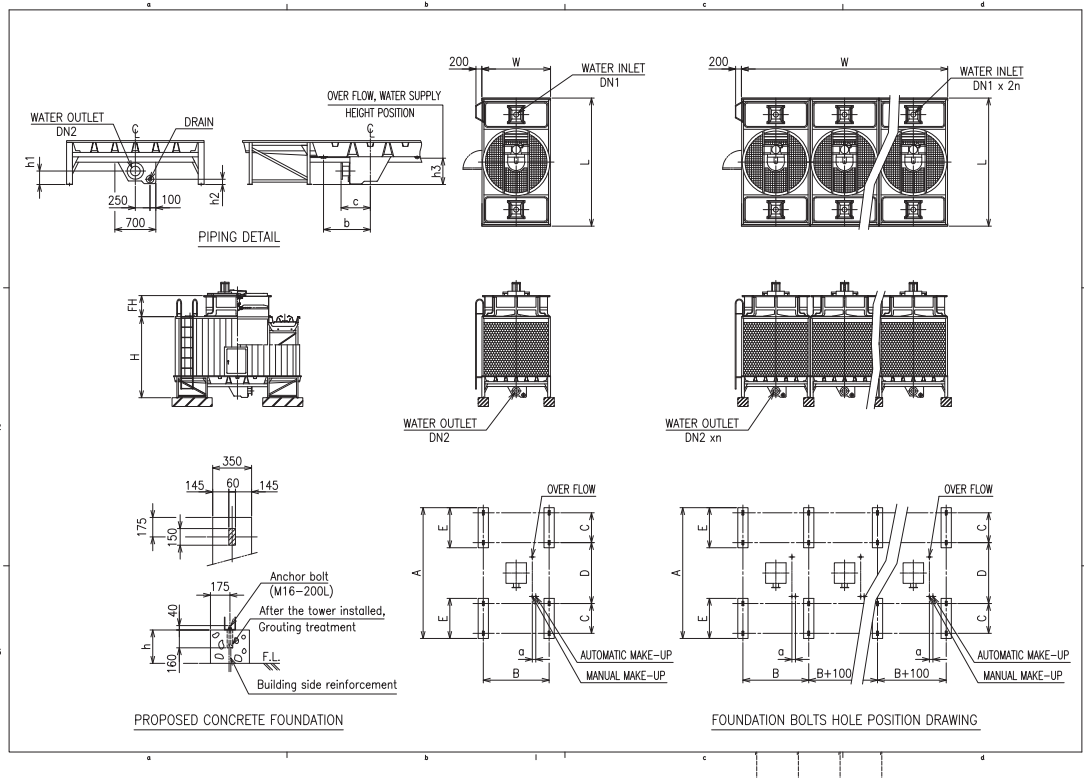
1. Not all of the cooling tower models are shown in this catalog due to the limited space. The drawing of more than five cells assembled together can be provided separately by contacting our windows.
2. Parameter table is subject to change without notice due to more advanced technology. The dimension in this catalog is only a reference, please use the drawing specifically provided for your project in practical site work.
3. Our company can provide other special forms of cooling tower to meet your requirements. And please contact us.
4. Internal piping type is available only CDW - 300 ~ 400.

DIMENSION & FOUNDATION DRAWINGS OF CDW MODELS

MODEL

CDW-100ASY[ASSY]-X ~ CDW-250ASY[ASSY]-X

CDW-100ASY[ASSY]-X *n ~ CDW-250ASY[ASSY]-X*n



| CDW | L | W | H | FH | h1 | h2 | h3 | a | b | c | A | B | C | D | E | DN1 (A) | DN2 (A) | Motor (kW) |
|-----|------|------|------|-----|-----|-----|-----|-----|-----|-----|------|------|------|------|------|---------|---------|------------|
| 100 | 3770 | 1750 | 2770 | 615 | 230 | 90 | 450 | 120 | 500 | 460 | 3870 | 1650 | 1020 | 1480 | 1370 | 100 x 2 | 125 x 1 | 3.7 |
| 125 | 3770 | 1950 | 2770 | 615 | 230 | 90 | 450 | 120 | 500 | 460 | 3870 | 1850 | 1020 | 1480 | 1370 | 100 x 2 | 125 x 1 | 3.7 |
| 135 | 4070 | 2150 | 2770 | 645 | 230 | 90 | 450 | 120 | 650 | 500 | 4170 | 2050 | 1020 | 1780 | 1370 | 100 x 2 | 150 x 1 | 3.7 |
| 150 | 4070 | 2150 | 2770 | 645 | 230 | 90 | 450 | 120 | 650 | 500 | 4170 | 2050 | 1020 | 1780 | 1370 | 100 x 2 | 150 x 1 | 5.5 |
| 175 | 4370 | 2350 | 2770 | 715 | 230 | 90 | 450 | 120 | 800 | 500 | 4470 | 2250 | 1020 | 2080 | 1370 | 100 x 2 | 150 x 1 | 5.5 |
| 200 | 4370 | 2450 | 2770 | 715 | 230 | 90 | 450 | 120 | 800 | 500 | 4470 | 2350 | 1020 | 2080 | 1370 | 100 x 2 | 150 x 1 | 7.5 |
| 250 | 4370 | 2450 | 3925 | 720 | 310 | 170 | 530 | 120 | 800 | 570 | 4510 | 2350 | 1040 | 2080 | 1390 | 125 x 2 | 200 x 1 | 11.0 |

| CDW | L | W | H | FH | h1 | h2 | h3 | a | b | c | A | B | C | D | E | DN1 (A) | DN2 (A) | Motor (kW) |
|--------|------|----------|------|-----|-----|-----|-----|-----|-----|-----|------|------|------|------|------|----------|---------|------------|
| 100* n | 3770 | 1750 x n | 2770 | 615 | 230 | 90 | 450 | 120 | 500 | 460 | 3870 | 1650 | 1020 | 1480 | 1370 | 100 x 2n | 125 x n | 3.7 * n |
| 125* n | 3770 | 1950 x n | 2770 | 615 | 230 | 90 | 450 | 120 | 500 | 460 | 3870 | 1850 | 1020 | 1480 | 1370 | 100 x 2n | 125 x n | 3.7 * n |
| 135* n | 4070 | 2150 x n | 2770 | 645 | 230 | 90 | 450 | 120 | 650 | 500 | 4170 | 2050 | 1020 | 1780 | 1370 | 100 x 2n | 150 x n | 3.7 * n |
| 150* n | 4070 | 2150 x n | 2770 | 645 | 230 | 90 | 450 | 120 | 650 | 500 | 4170 | 2050 | 1020 | 1780 | 1370 | 100 x 2n | 150 x n | 5.5 * n |
| 175* n | 4370 | 2350 x n | 2770 | 715 | 230 | 90 | 450 | 120 | 800 | 500 | 4470 | 2250 | 1020 | 2080 | 1370 | 100 x 2n | 150 x n | 5.5 * n |
| 200* n | 4370 | 2450 x n | 2770 | 715 | 230 | 90 | 450 | 120 | 800 | 500 | 4470 | 2350 | 1020 | 2080 | 1370 | 100 x 2n | 150 x n | 7.5 * n |
| 250* n | 4370 | 2450 x n | 3925 | 720 | 310 | 170 | 530 | 120 | 800 | 570 | 4510 | 2350 | 1040 | 2080 | 1390 | 125 x 2n | 200 x n | 11.0 * n |

* Internal piping type is also available on request (CDW-100ASW ~ CDW-250ASW).

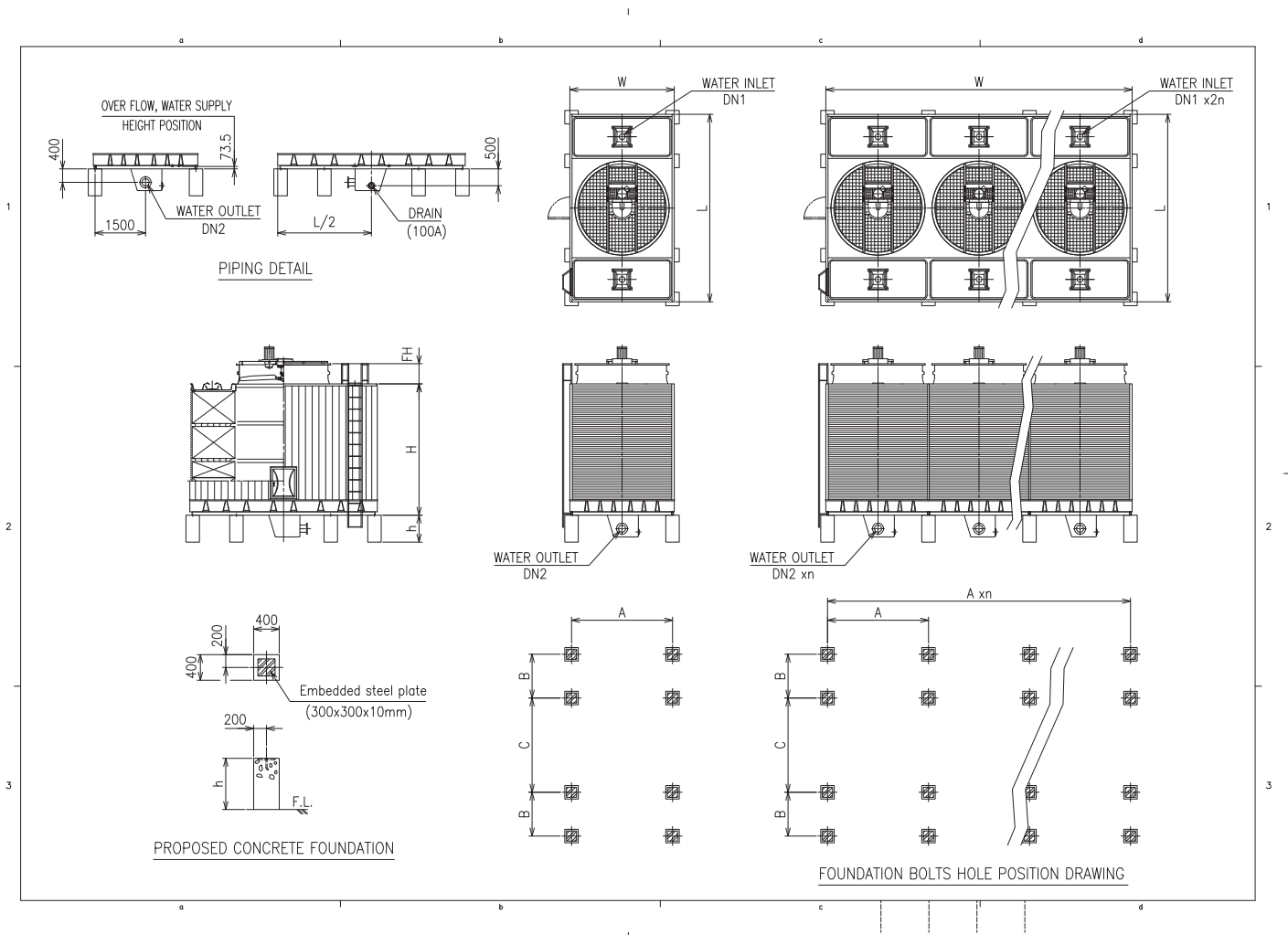
* ASSY means super low noise.

* Foundation (h) is customer's scope.

MODEL

CDW-300ASY-S ~ CDW-350ASY-S

CDW-300ASY-S *n ~ CDW-350ASY-S*n



| CDW | L | W | H | FH | A | B | C | DN1 | DN2 | Motor (kW) |
|-------|------|------|------|-----|------|------|------|---------|---------|------------|
| 300*1 | 5570 | 3100 | 3900 | 600 | 3000 | 1300 | 2800 | 150 x 2 | 200 x 1 | 7.5 |
| 350*1 | 5570 | 3100 | 3900 | 600 | 3000 | 1300 | 2800 | 150 x 2 | 200 x 1 | 11.0 |

| CDW | L | W | H | FH | A | B | C | DN1 | DN2 | Motor (kW) |
|--------|------|------------------------|------|-----|------|------|------|----------|---------|------------|
| 300* n | 5570 | $(3100*n)-(100*(n-1))$ | 3900 | 600 | 3000 | 1400 | 2600 | 150 x 2n | 200 x n | 7.5 * n |
| 350* n | 5570 | $(3100*n)-(100*(n-1))$ | 3900 | 600 | 3000 | 1400 | 2600 | 150 x 2n | 200 x n | 11.0 * n |

* Internal piping type is also available on request (CDW-300ASW ~ CDW-350ASW).

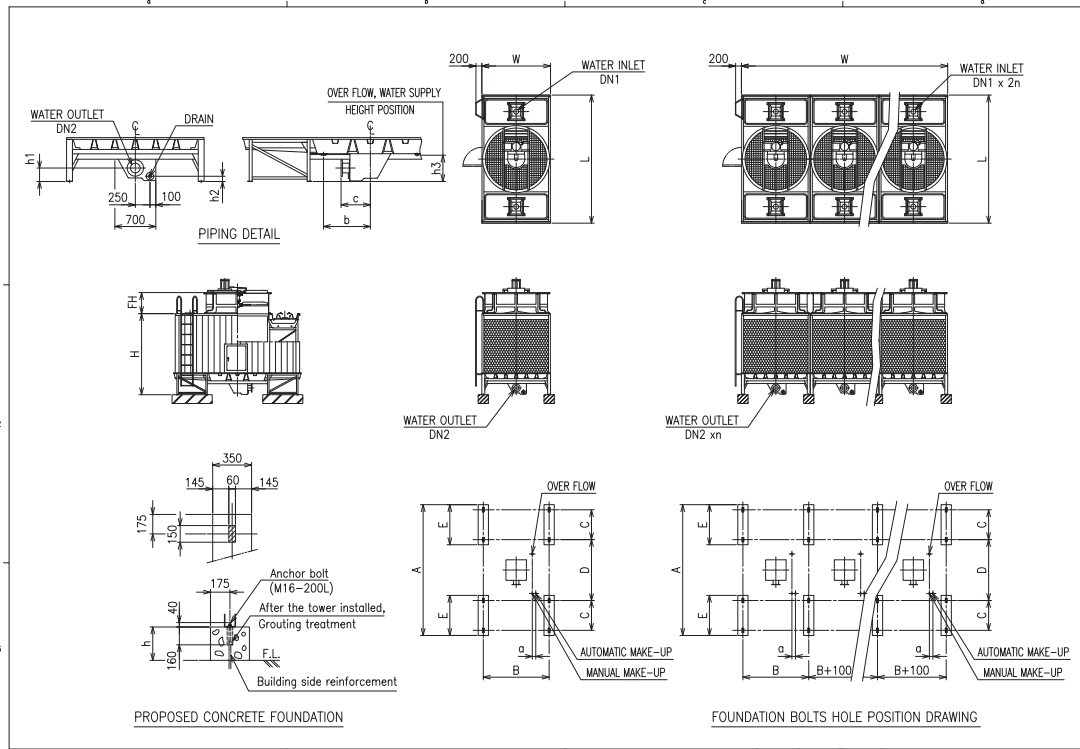


DIMENSION & FOUNDATION DRAWINGS OF CDW MODELS

MODEL

CDW-100ASY[ASSY]-C ~ CDW-250ASY[ASSY]-C (CTI CERTIFICATE MODEL)

CDW-100ASY[ASSY]-C *n ~ CDW-250ASY[ASSY]-C*n (CTI CERTIFICATE MODEL)



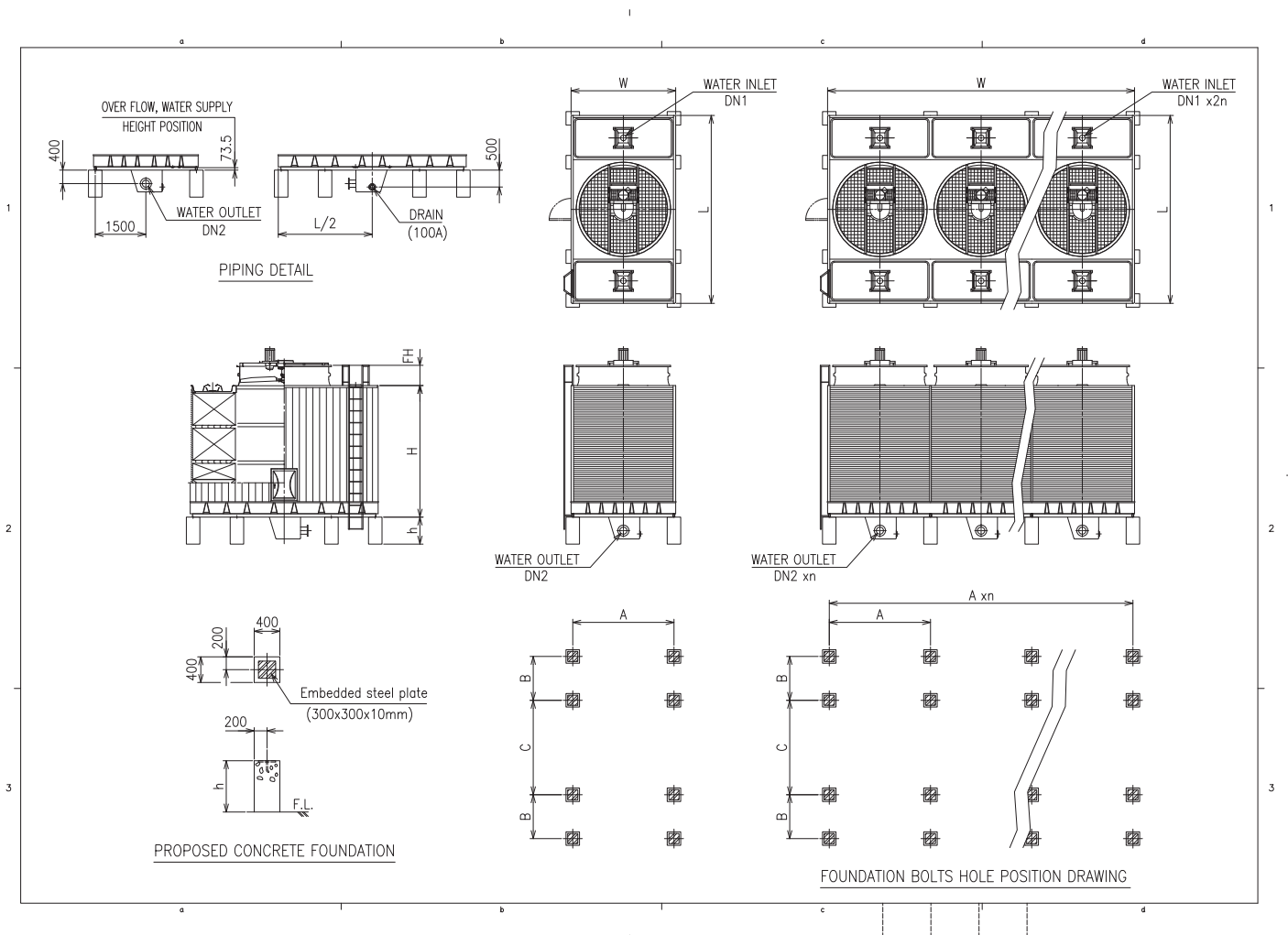
| CDW | L | W | H | FH | h1 | h2 | h3 | a | b | c | A | B | C | D | E | DN1 (A) | DN2 (A) |
|-----|------|------|------|-----|-----|-----|-----|-----|-----|-----|------|------|------|------|------|---------|---------|
| 100 | 3770 | 1750 | 2770 | 615 | 230 | 90 | 450 | 120 | 500 | 460 | 3870 | 1650 | 1020 | 1480 | 1370 | 100 x 2 | 125 x 1 |
| 125 | 3770 | 1950 | 2770 | 615 | 230 | 90 | 450 | 120 | 500 | 460 | 3870 | 1850 | 1020 | 1480 | 1370 | 100 x 2 | 125 x 1 |
| 135 | 4070 | 2150 | 2770 | 645 | 230 | 90 | 450 | 120 | 650 | 500 | 4170 | 2050 | 1020 | 1780 | 1370 | 100 x 2 | 150 x 1 |
| 150 | 4070 | 2150 | 2770 | 645 | 230 | 90 | 450 | 120 | 650 | 500 | 4170 | 2050 | 1020 | 1780 | 1370 | 100 x 2 | 150 x 1 |
| 175 | 4370 | 2350 | 2770 | 715 | 230 | 90 | 450 | 120 | 800 | 500 | 4470 | 2250 | 1020 | 2080 | 1370 | 100 x 2 | 150 x 1 |
| 200 | 4370 | 2450 | 2770 | 715 | 230 | 90 | 450 | 120 | 800 | 500 | 4470 | 2350 | 1020 | 2080 | 1370 | 100 x 2 | 150 x 1 |
| 250 | 4370 | 2450 | 3925 | 720 | 310 | 170 | 530 | 120 | 800 | 570 | 4510 | 2350 | 1040 | 2080 | 1390 | 125 x 2 | 200 x 1 |

| CDW | L | W | H | FH | h1 | h2 | h3 | a | b | c | A | B | C | D | E | DN1 (A) | DN2 (A) |
|--------|------|----------|------|-----|-----|-----|-----|-----|-----|-----|------|------|------|------|------|----------|---------|
| 100* n | 3770 | 1750 x n | 2770 | 615 | 230 | 90 | 450 | 120 | 500 | 460 | 3870 | 1650 | 1020 | 1480 | 1370 | 100 x 2n | 125 x n |
| 125* n | 3770 | 1950 x n | 2770 | 615 | 230 | 90 | 450 | 120 | 500 | 460 | 3870 | 1850 | 1020 | 1480 | 1370 | 100 x 2n | 125 x n |
| 135* n | 4070 | 2150 x n | 2770 | 645 | 230 | 90 | 450 | 120 | 650 | 500 | 4170 | 2050 | 1020 | 1780 | 1370 | 100 x 2n | 150 x n |
| 150* n | 4070 | 2150 x n | 2770 | 645 | 230 | 90 | 450 | 120 | 650 | 500 | 4170 | 2050 | 1020 | 1780 | 1370 | 100 x 2n | 150 x n |
| 175* n | 4370 | 2350 x n | 2770 | 715 | 230 | 90 | 450 | 120 | 800 | 500 | 4470 | 2250 | 1020 | 2080 | 1370 | 100 x 2n | 150 x n |
| 200* n | 4370 | 2450 x n | 2770 | 715 | 230 | 90 | 450 | 120 | 800 | 500 | 4470 | 2350 | 1020 | 2080 | 1370 | 100 x 2n | 150 x n |
| 250* n | 4370 | 2450 x n | 3925 | 720 | 310 | 170 | 530 | 120 | 800 | 570 | 4510 | 2350 | 1040 | 2080 | 1390 | 125 x 2n | 200 x n |

* ASSY means super low noise.
 * Foundation (h) is customer's scope.

MODEL

CDW-300ASY-C (CTI CERTIFICATE MODEL)



| CDW | L | W | H | FH | A | B | C | DN1 | DN2 |
|-----|------|------|------|-----|------|------|------|---------|---------|
| 300 | 5570 | 3100 | 3900 | 600 | 3000 | 1300 | 2800 | 150 x 2 | 200 x 1 |

| CDW | L | W | H | FH | A | B | C | DN1 | DN2 |
|--------|------|----------------------|------|-----|------|------|------|----------|---------|
| 300* n | 5570 | (3100*n)-(100*(n-1)) | 3900 | 600 | 3000 | 1300 | 2800 | 150 x 2n | 200 x n |

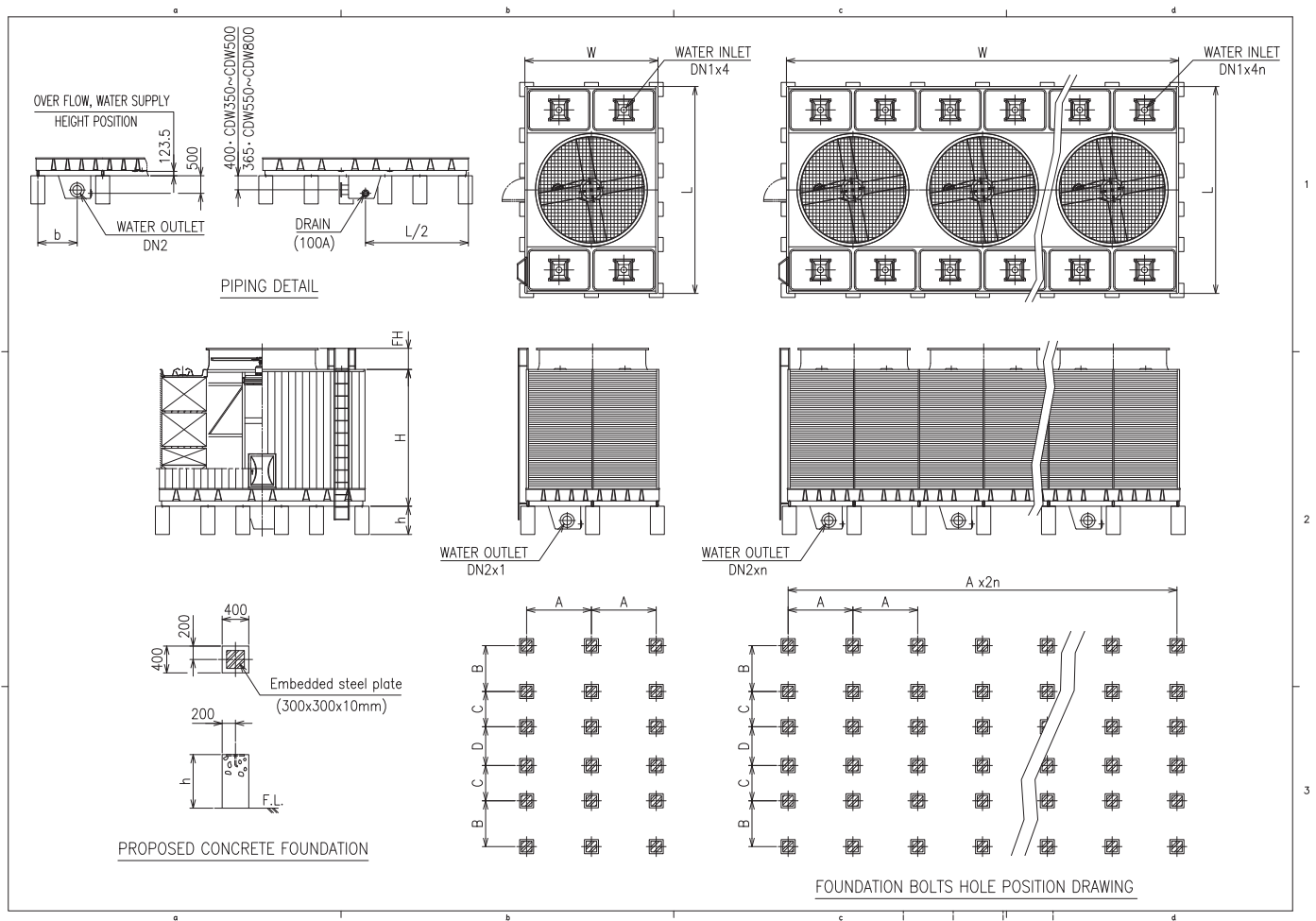
* Internal piping type is also available on request (CDW-300ASW ~ CDW-350ASW).
 * Foundation (h) is customer's scope.

DIMENSION & FOUNDATION DRAWINGS OF CDW MODELS

MODEL

CDW-350ASY-C ~ CDW-800ASY-C (CTI CERTIFICATE MODEL)

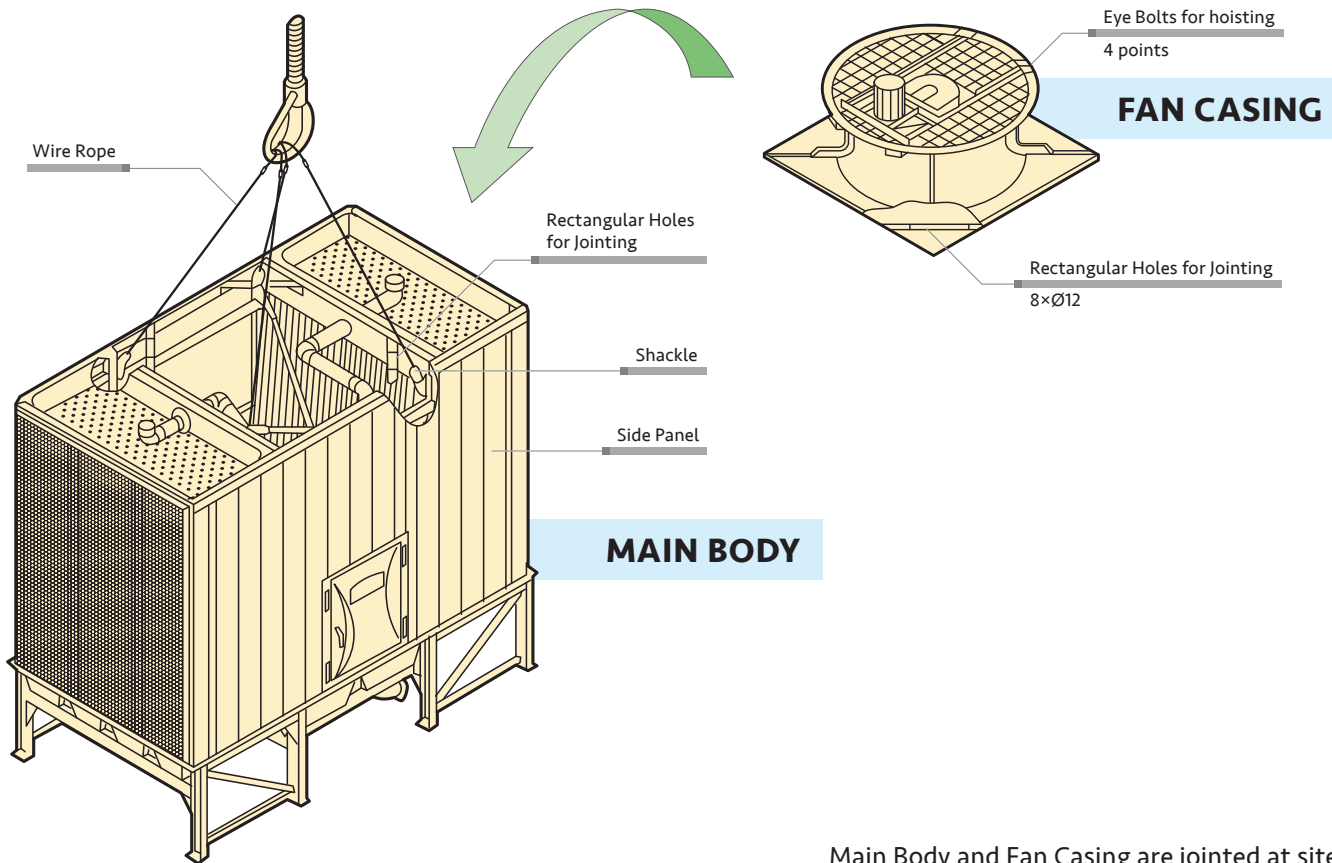
CDW-350ASY-C*n ~ CDW-800ASY-C*n (CTI CERTIFICATE MODEL)



| CDW | L | W (1 cell) | W (n cell) | H | FH | A | B | C | D | b | DN1 | DN2 |
|--------|------|------------|----------------------|------|-----|------|------|------|------|------|----------|---------|
| 350* n | 5870 | 3800 | (3800*n)-(100*(n-1)) | 3950 | 600 | 1850 | 1300 | 1000 | 1100 | 1025 | 125 x 4n | 250 x n |
| 400* n | 5870 | 3800 | (3800*n)-(100*(n-1)) | 3950 | 600 | 1850 | 1300 | 1000 | 1100 | 1025 | 125 x 4n | 250 x n |
| 450* n | 6470 | 3800 | (4600*n)-(100*(n-1)) | 3875 | 600 | 2250 | 1300 | 1300 | 1100 | 1125 | 125 x 4n | 250 x n |
| 500* n | 6470 | 4600 | (4600*n)-(100*(n-1)) | 3875 | 600 | 2250 | 1300 | 1300 | 1100 | 1125 | 125 x 4n | 250 x n |
| 550* n | 6470 | 4600 | (4600*n)-(100*(n-1)) | 4520 | 600 | 2250 | 1300 | 1300 | 1100 | 1125 | 150 x 4n | 300 x n |
| 600* n | 6470 | 4600 | (4600*n)-(100*(n-1)) | 4520 | 600 | 2250 | 1300 | 1300 | 1100 | 1125 | 150 x 4n | 300 x n |
| 650* n | 6870 | 5400 | (5400*n)-(100*(n-1)) | 4520 | 600 | 2650 | 1300 | 1500 | 1100 | 1325 | 150 x 4n | 300 x n |
| 700* n | 6870 | 5400 | (5400*n)-(100*(n-1)) | 4520 | 600 | 2650 | 1300 | 1500 | 1100 | 1325 | 150 x 4n | 300 x n |
| 750* n | 6870 | 5800 | (5800*n)-(100*(n-1)) | 4520 | 600 | 2850 | 1300 | 1500 | 1100 | 1425 | 150 x 4n | 350 x n |
| 800* n | 6870 | 5800 | (5800*n)-(100*(n-1)) | 4520 | 600 | 2850 | 1300 | 1500 | 1100 | 1425 | 150 x 4n | 350 x n |

* Foundation (h) is customer's scope.

DELIVERY AND LIFT UP ARRANGEMENT (CDW-100 ~ CDW-250)



Main Body and Fan Casing are jointed at site.

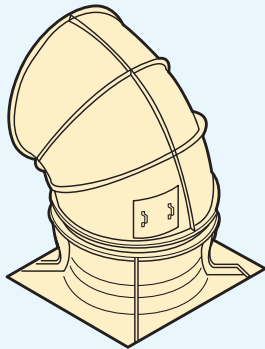
| CDW-X CDW-C | MAIN BODY | | | FAN CASING | | |
|----------------|-----------|-------|------|------------|-------|------|
| | MASS (kg) | | Q'TY | MASS (kg) | | Q'TY |
| | CDW-X | CDW-C | | CDW-X | CDW-C | |
| 100 | 670 | 670 | 1 | 210 | 230 | 1 |
| 125 | 700 | 700 | 1 | 210 | 230 | 1 |
| 135 | 730 | 730 | 1 | 260 | 280 | 1 |
| 150 | 730 | 730 | 1 | 280 | 300 | 1 |
| 175 | 830 | 830 | 1 | 310 | 330 | 1 |
| 200 | 850 | 850 | 1 | 330 | 350 | 1 |
| 250 | 1060 | 1060 | 1 | 360 | 380 | 1 |
| 135 | 730 | 730 | 2 | 260 | 280 | 2 |
| 150 | 730 | 730 | 2 | 280 | 300 | 2 |
| 175 | 830 | 830 | 2 | 310 | 330 | 2 |
| 200 | 850 | 850 | 2 | 330 | 350 | 2 |
| 250 | 1060 | 1660 | 2 | 360 | 380 | 2 |
| 150 | 730 | 730 | 3 | 280 | 300 | 3 |
| 175 | 830 | 830 | 3 | 310 | 330 | 3 |
| 200 | 850 | 850 | 3 | 330 | 350 | 3 |
| 250 | 1060 | 1060 | 3 | 360 | 380 | 3 |
| 175 | 830 | 830 | 4 | 310 | 330 | 4 |
| 200 | 850 | 850 | 4 | 330 | 350 | 4 |
| 250 | 1060 | 1060 | 4 | 360 | 380 | 4 |



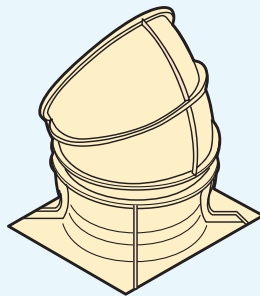
OPTIONS FOR COOLING TOWER

FRP DUCT

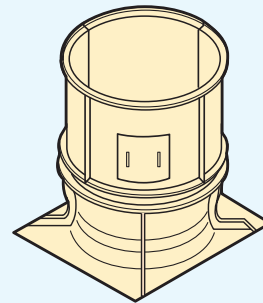
Avoid air short circuiting
Reduce noise level



90° Elbow Duct



60° Elbow Duct

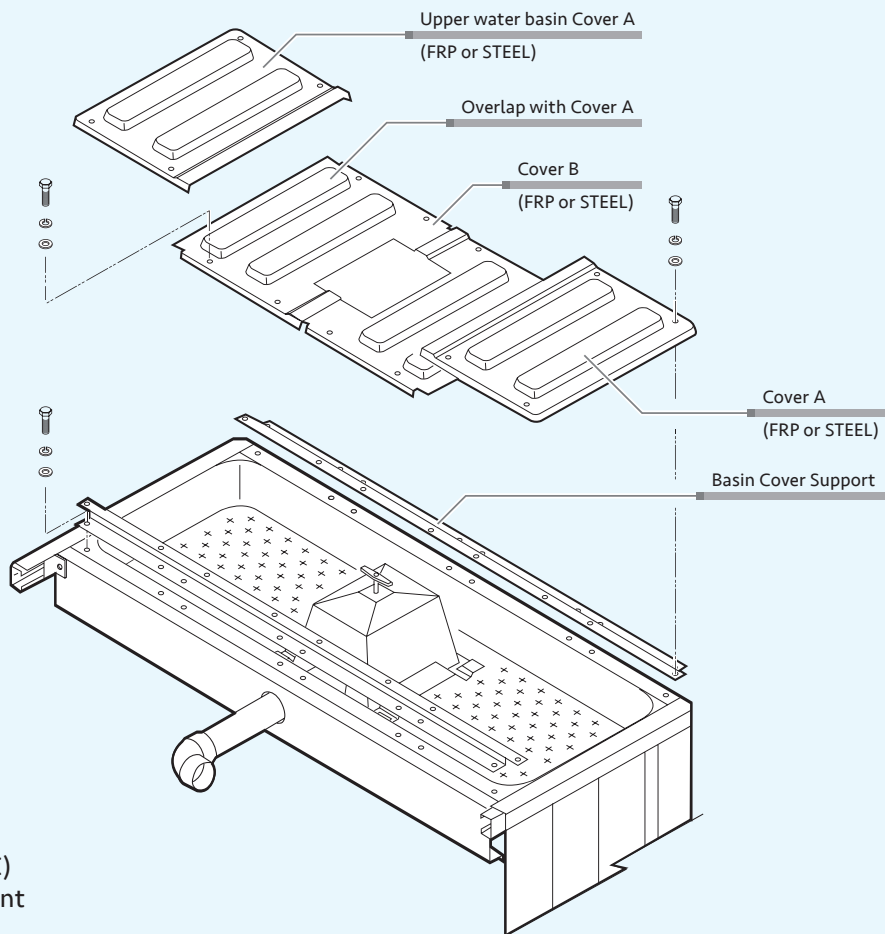


Straight Duct (1mH, 2mH)

* CDW-300 above matches 45° Elbow Duct.

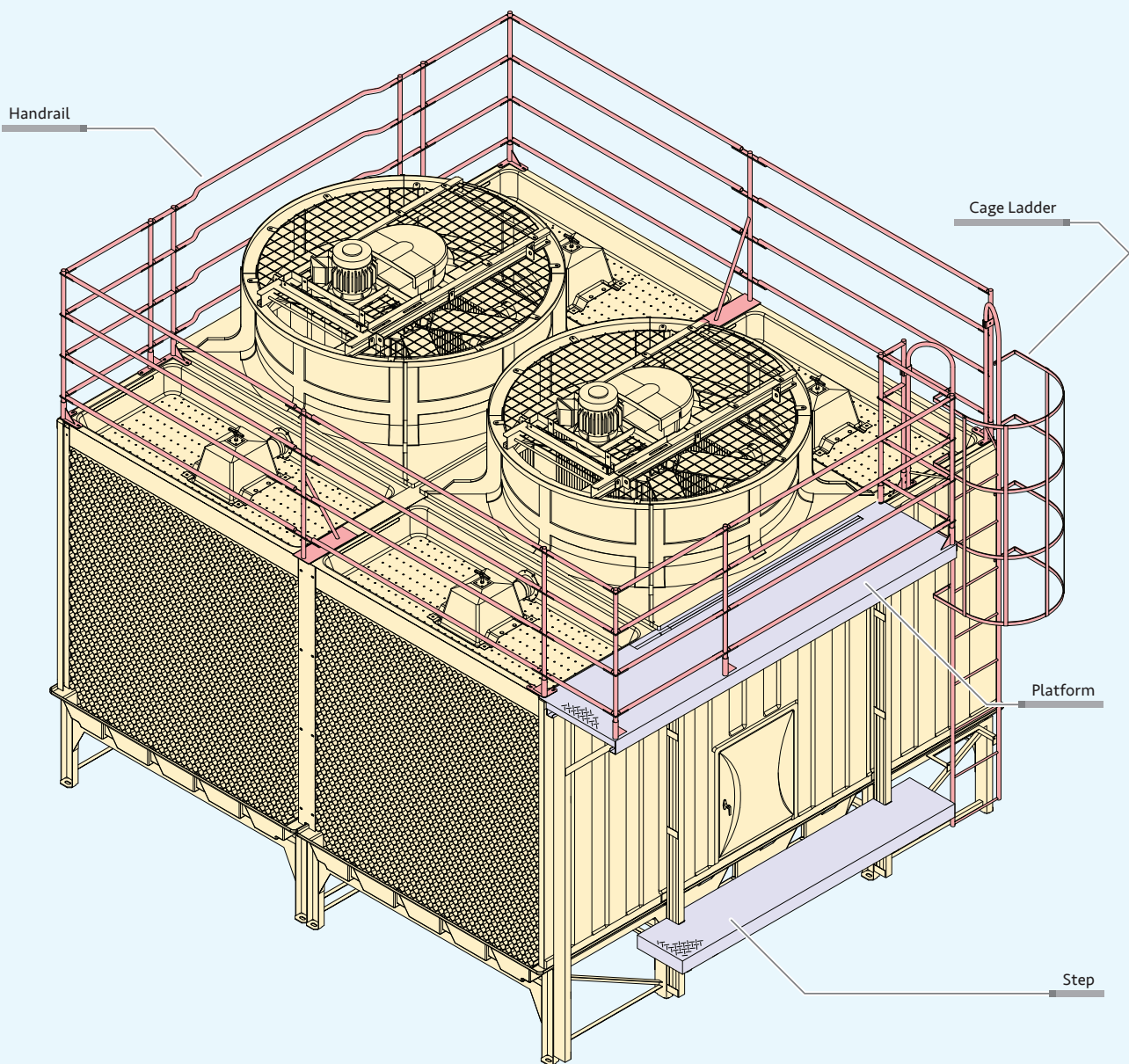
UPPER WATER BASIN COVER (FRP OR STEEL)

Protect from invasion of dust into the upper basin
Interrupt sunlight which causes algae growth
Possible to walk on the cover



Other Option Items
Partition
High Temp Fill (Less than 80°C)
Vibration Absorption Equipment
Water Treatment Equipment

HANDRAIL, CAGE LADDER, PLATFORM AND STEP





CAUTIONS FOR INSTALLATION WORKS

1. SCOPE OF WORKS (STANDARD)

The following works at site shall be out of our scope.

- ❶ Lift up and carry works
- ❷ Foundation works (incl. installation of anchor bolts, mortar filled works and installation of steel frame stand)
- ❸ Piping works
- ❹ Electric (wiring) works

2. SELECTION OF INSTALLATION PLACE

Select an installation place based on the Building Standards Act or Regulations.

- ❶ A place with good ventilation where discharged air from cooling tower will not recirculate.
- ❷ Avoid places with much dust, dirt or smoke and places near heat source.

- ❸ If the walls will be placed around the cooling tower, at least the cooling tower louver height space needed between them. The wall should be lower than the cooling tower.
- ❹ Select a place where the noise is not magnified by echoes. Avoid the vicinity of windows of neighboring houses as much as possible.
- ❺ Avoid a place where has no fresh air intake for air conditioning.

3. OTHER CAUTIONS

- ❶ Foundation level should be horizontally.
- ❷ Foundation bolts should be furnished before cooling towers are delivered to the site.

OPERATIONAL CAUTIONS

1. OPERATION

- ❶ The specified water flow must be maintained to obtain and hold the rated capacity.
- ❷ As V-Belt may stretch at the early stage of operation, make the first check the day after the operation commissioning to adjust, if any. Thereafter, the periodic checks and adjustment are necessary.
- ❸ During the operation always watch for the vibration, noise, the electric current and the cooling water temperature. Vibration and noise primarily originates from the moving parts such as belt speed reducer, motor and fan. Do not overlook even slightest abnormalities.

2. MAINTENANCE

- ❶ Regularly drain water and clean the lower water basin and strainer.
- ❷ Water quality control are recommended to prevent poor water quality, scale and algae growth.
- ❸ Consumption parts such as V-Belts and bearings are required to replace periodically (estimated timing for exchanging a V-Belt is roughly 7000 – 8000 hours).



PRECAUTIONS FOR SAFETY

Cooling towers described in this catalogue are of our standard specifications.

❗ BEFORE USE

- Before Use, read the "Instruction Manual" carefully and use the towers correctly.

❗ BEFORE INSTALLATION

- Request installation from the distributor or professional agency.
- Improper installation work may cause toppling, water leakage, electric shocks or fire which will endanger operations.
- Make sure to use extra-cost options such as an electric heater designated by us.
- Space is required for maintenance work around the machine. Lack of space may obstruct safety work and cause injuries.

❗ LOCATIONS FOR USE

- Do not install in places where combustible gases leak or flammables exist. Fire may occur in places where flammable gases are generated, flow in or are retained, and carbon fibers are floated.

❗ MAINTENANCE AND INSPECTION

- Periodic maintenance and inspection are required other than inspections for daily operation.
- Improper maintenance and inspection may cause a fire, electric shocks and burns. As maintenance and inspection require special skills, consult manufacturer or distributor.

* NOTICE FOR WATER QUALITY CONTROL

If the circulating water is left as it is, slime deposits in the water bath and piping will develop. The slime is formed from many kinds of algae and fungi, particularly; metabolic products from algae sometimes help fungi grow.

Disease-causing bacteria among bacteria may also exist, therefore, please be advised to clean or control the water quality at least once a month to prevent algae from forming.

• YOUR CONTACT



EBARA THERMAL SYSTEMS (THAILAND) CO., LTD. (HEAD OFFICE)

3rd Floor, 125 Petchburi Road, Thung Phaya Thai,
Rajthevee, Bangkok 10400, Thailand

Tel: (+66)-2612-0314-6

Fax: (+66)-2612-0309

Website: www.ers.ebara.com

Specifications listed in this brochure are subject to change without notice due to technical improvement on our products. The products described here in fall under "the goods listed in row 16 of the appended table 1 of the Export Trade Control Order of Japan", so in case of export of such products, you need to confirm "use" and "purchaser and/or end-user" and as case may be obtain the approval of the Ministry of Economy, Trade and Industry. (Please confirm these conditions on your own.)

Please contact local agents for more information.

*Model xxx in this catalogue is our model code.